

CEACAM5 Antibody
Catalog # ASC11690**Specification****CEACAM5 Antibody - Product Information**

Application	WB, E
Primary Accession	P06731
Other Accession	NP_004354 , 98986445
Reactivity	Human, Mouse, Rat
Host	Rabbit
Clonality	Polyclonal
Isotype	IgG
Calculated MW	Predicted: 77 kDa
Application Notes	Observed: 80kDa KDa CEACAM5 antibody can be used for detection of CEACAM5 by Western blot at 1 - 2 µg/ml.

CEACAM5 Antibody - Additional InformationGene ID **1048****Target/Specificity**

CEACAM5; CEACAM5 antibody is human, mouse and rat reactive. CEACAM5 antibody is predicted to not cross-react with other CEACAM protein family members.

Reconstitution & Storage

CEACAM5 antibody can be stored at 4°C for three months and -20°C, stable for up to one year.

Precautions

CEACAM5 Antibody is for research use only and not for use in diagnostic or therapeutic procedures.

CEACAM5 Antibody - Protein Information**Name** CEACAM5 ([HGNC:1817](#))**Function**

Cell surface glycoprotein that plays a role in cell adhesion, intracellular signaling and tumor progression (PubMed: [10864933](http://www.uniprot.org/citations/10864933), PubMed: [10910050](http://www.uniprot.org/citations/10910050), PubMed: [2803308](http://www.uniprot.org/citations/2803308)). Mediates homophilic and heterophilic cell adhesion with other carcinoembryonic antigen-related cell adhesion molecules, such as CEACAM6 (PubMed: [2803308](http://www.uniprot.org/citations/2803308)). Plays a role as an oncogene by promoting tumor progression; induces resistance to anoikis of colorectal carcinoma cells (PubMed: [10910050](http://www.uniprot.org/citations/10910050)).

Cellular Location

Cell membrane; Lipid-anchor, GPI-anchor. Apical cell membrane. Cell surface Note=Localized to the apical glycocalyx surface

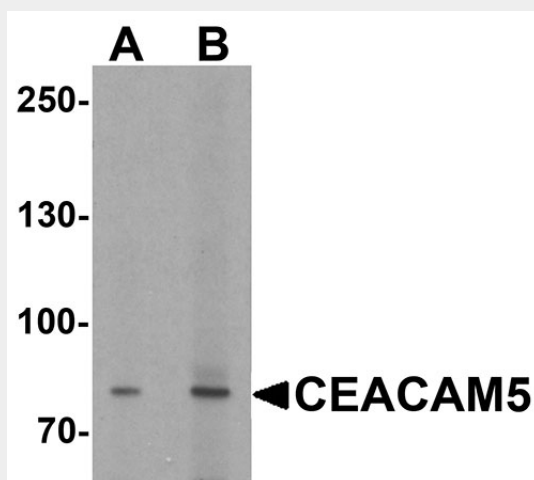
Tissue Location

Expressed in columnar epithelial and goblet cells of the colon (at protein level) (PubMed:10436421). Found in adenocarcinomas of endodermally derived digestive system epithelium and fetal colon.

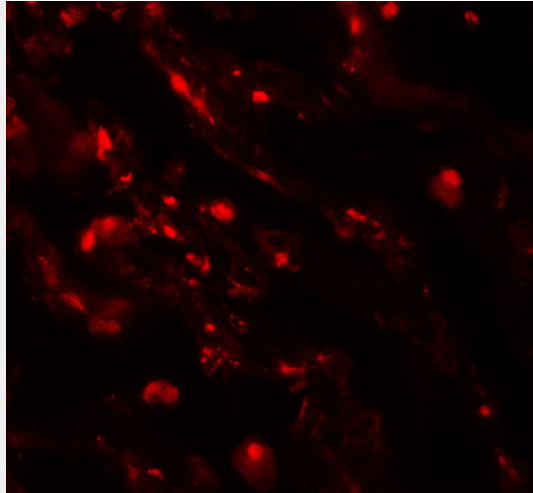
CEACAM5 Antibody - Protocols

Provided below are standard protocols that you may find useful for product applications.

- [Western Blot](#)
- [Blocking Peptides](#)
- [Dot Blot](#)
- [Immunohistochemistry](#)
- [Immunofluorescence](#)
- [Immunoprecipitation](#)
- [Flow Cytometry](#)
- [Cell Culture](#)

CEACAM5 Antibody - Images

Western blot analysis of CEACAM5 in rat lung tissue lysate with CEACAM5 antibody at (A) 1 and (B) 2 µg/ml.



Immunofluorescence of CEACAM5 in human lung tissue with CEACAM5 antibody at 20 µg/mL.

CEACAM5 Antibody - Background

CEACAM5 is a member of the carcinoembryonic antigen (CEA) family, which belongs to the immunoglobulin superfamily (1,2). CEACAM proteins are involved in cell-cell recognition and modulate cellular processes that range from the shaping of tissue architecture and neovascularization to the regulation of insulin homeostasis and T-cell proliferation (2). CEACAM5 has been shown to be overexpressed in a majority of carcinomas and has been suggested to be a intercellular adhesion molecule involved in cancer invasion and metastasis (3).

CEACAM5 Antibody - References

Gold P and Freedman SO. Specific carinoembryonic antigens of the human digestive system. J. Exp. Med. 1965; 122:467-81.
Kuespert K, Pils S, and Hauck CR. CEACAMs: their role in physiology and pathophysiology. Curr. Opin. Cell Biol. 2006; 565-71.
Yoshioka T, Masuko T, Kotanagi H, et al. Homotypic adhesion though carcinoembryonic antigen plays a role in hepatic metastasis development. Jpn. J. Cancer Res. 1998; 89:177-85.